

**His6-DEP-1 Antibody**  
**Purified Rabbit Polyclonal Antibody (Pab)**  
**Catalog # AP11085A****Specification**

---

**His6-DEP-1 Antibody - Product Information**

Application	WB, IHC-P, IF,E
Primary Accession	<a href="#">Q12913</a>
Other Accession	<a href="#">NP_002834.3</a>
Reactivity	Human
Host	Rabbit
Clonality	Polyclonal
Isotype	Rabbit IgG
Antigen Region	Whole Length of Recombinant DEP-1Protein

**His6-DEP-1 Antibody - Additional Information****Gene ID** 5795**Other Names**

Receptor-type tyrosine-protein phosphatase eta, Protein-tyrosine phosphatase eta, R-PTP-eta, Density-enhanced phosphatase 1, DEP-1, HPTP eta, Protein-tyrosine phosphatase receptor type J, R-PTP-J, CD148, PTPRJ, DEP1

**Target/Specificity**

Poly-HIS protein were used to produced this antibody.

**Dilution**

WB~~1:1000

IHC-P~~1:10~50

IF~~1:10~50

E~~Use at an assay dependent concentration.

**Format**

Purified monoclonal antibody supplied in PBS with 0.09% (W/V) sodium azide. This antibody is purified through a protein A column, followed by dialysis against PBS.

**Storage**

Maintain refrigerated at 2-8°C for up to 2 weeks. For long term storage store at -20°C in small aliquots to prevent freeze-thaw cycles.

**Precautions**

His6-DEP-1 Antibody is for research use only and not for use in diagnostic or therapeutic procedures.

**His6-DEP-1 Antibody - Protein Information**

**Name** PTPRJ

**Synonyms** DEP1

**Function** Tyrosine phosphatase which dephosphorylates or contributes to the dephosphorylation of CTNND1, FLT3, PDGFRB, MET, KDR, LYN, SRC, MAPK1, MAPK3, EGFR, TJP1, OCLN, PIK3R1 and PIK3R2 (PubMed:[10821867](#), PubMed:[12062403](#), PubMed:[12370829](#), PubMed:[12475979](#), PubMed:[18348712](#), PubMed:[19494114](#), PubMed:[19922411](#), PubMed:[21262971](#)). Plays a role in cell adhesion, migration, proliferation and differentiation (PubMed:[12370829](#), PubMed:[14709717](#), PubMed:[16682945](#), PubMed:[19836242](#)). Has a role in megakaryocytes and platelet formation (PubMed:[30591527](#)). Involved in vascular development (By similarity). Regulator of macrophage adhesion and spreading (By similarity). Positively affects cell-matrix adhesion (By similarity). Positive regulator of platelet activation and thrombosis. Negative regulator of cell proliferation (PubMed:[16682945](#)). Negative regulator of PDGF-stimulated cell migration; through dephosphorylation of PDGFR (PubMed:[21091576](#)). Positive regulator of endothelial cell survival, as well as of VEGF- induced SRC and AKT activation; through KDR dephosphorylation (PubMed:[18936167](#)). Negative regulator of EGFR signaling pathway; through EGFR dephosphorylation (PubMed:[19836242](#)). Enhances the barrier function of epithelial junctions during reassembly (PubMed:[19332538](#)). Negatively regulates T-cell receptor (TCR) signaling (PubMed:[11259588](#), PubMed:[9531590](#), PubMed:[9780142](#)). Upon T-cell TCR activation, it is up-regulated and excluded from the immunological synapses, while upon T- cell-antigen presenting cells (APC) disengagement, it is no longer excluded and can dephosphorylate PLCG1 and LAT to down-regulate prolongation of signaling (PubMed:[11259588](#), PubMed:[12913111](#)).

#### **Cellular Location**

Cell membrane; Single-pass type I membrane protein. Cell projection, ruffle membrane. Cell junction Note=After T-cell stimulation, it is temporarily excluded from immunological synapses

#### **Tissue Location**

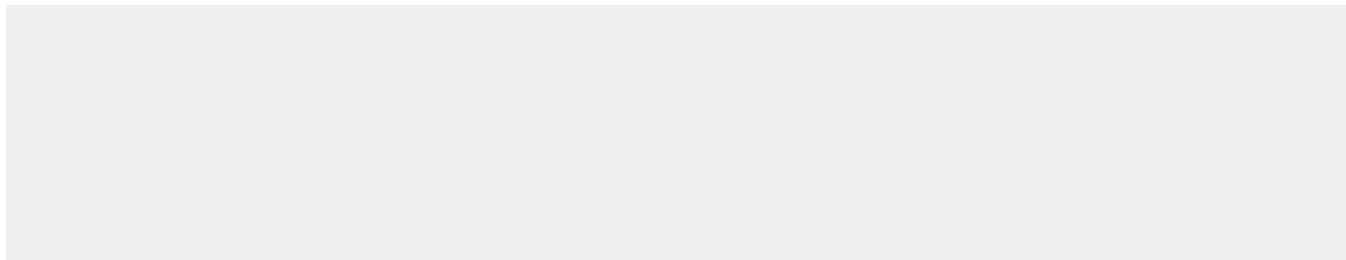
Expressed in the promyelocytic cell line HL-60, the granulocyte-macrophage colony-stimulating factor-dependent leukemic cell line F-36P, and the IL3 and erythropoietin-dependent leukemic cell line F-36E. Expressed predominantly in epithelial cells and lymphocytes. Enhanced expression at high cell density

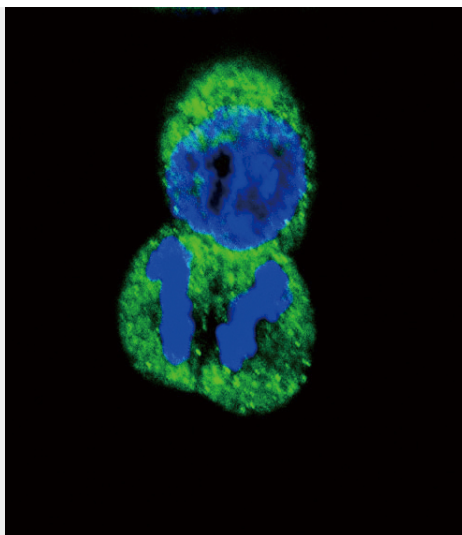
#### **His6-DEP-1 Antibody - Protocols**

Provided below are standard protocols that you may find useful for product applications.

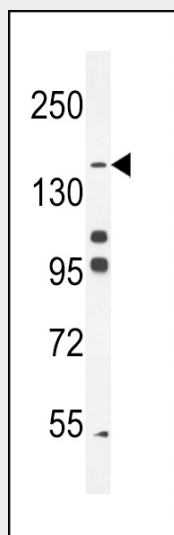
- [Western Blot](#)
- [Blocking Peptides](#)
- [Dot Blot](#)
- [Immunohistochemistry](#)
- [Immunofluorescence](#)
- [Immunoprecipitation](#)
- [Flow Cytometry](#)
- [Cell Culture](#)

#### **His6-DEP-1 Antibody - Images**

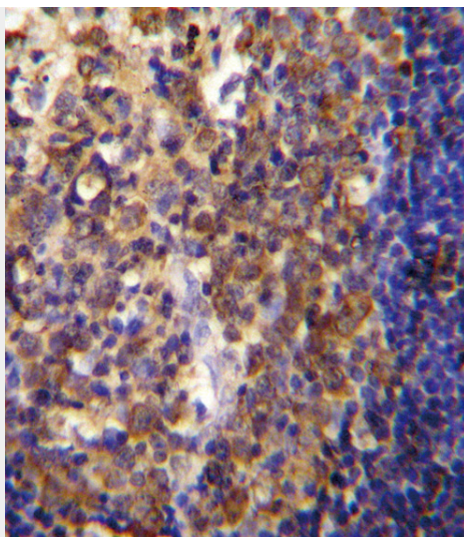




Confocal immunofluorescent analysis of His6-DEP-1 Antibody (Cat. #AP11085a) with HeLa cell followed by Alexa Fluor 488-conjugated goat anti-rabbit IgG (green). DAPI was used to stain the cell nuclear (blue).



His6-DEP-1 (Cat. #AP11085a) western blot analysis in K562 cell line lysates (35ug/lane). This demonstrates the DEP-1 antibody detected the DEP-1 protein (arrow).



His6-DEP-1 Antibody (Cat. #AP11085a) immunohistochemistry analysis in formalin fixed and paraffin embedded human tonsil tissue followed by peroxidase conjugation of the secondary antibody and DAB staining. This data demonstrates the use of His6-DEP-1 Antibody for immunohistochemistry. Clinical relevance has not been evaluated.

**His6-DEP-1 Antibody - Background**

May contribute to the mechanism of contact inhibition of cell growth.